

T&B® Fittings Series 35 Conduit Bodies

Product Manager: Craig Yoss

Product Engineer: Ming Cheng

Thomas & Betts is pleased to introduce Series 35 conduit bodies in LB, LR, LL, C, and T versions up to 4". T&B also offers TB and X fittings up to 2". Matching covers are available in iron and steel. Gaskets are manufactured from neoprene material.



Here are some frequently asked questions:

Q: What is the difference between a Form 7, a Form 8, and a Series 35 iron conduit body?

A: There are primarily 2 differences between each of these fittings. These pertain to the cover, and the size of the fitting. Please review the attached document that examines the differences in all three fittings.

Q: Do other manufacturers make a Series 35 type conduit body?

A: Yes. Appleton was the first manufacturer to make a "series 35" type conduit body. It is called their Form 35 conduit bodies. Crouse-Hinds in 2005 introduced their version called their Form 5 Conduit Bodies. Killark also offers a Form 35 conduit body.

Q: Do our covers interchange with the Crouse-Hinds Form 5 conduit bodies and the Appleton Form 35 Conduit Bodies?

A: Yes, they are UL interchangeable with both.

Q: Why did we offer the Series 35 when we have a Form 8 and a Form 7 already?

A: Appleton commands a sizable part of the conduit body market. Where Appleton is strong, they lead with their Form 35 conduit bodies. These fittings have a unique interface, and our Form 7 and Form 8 covers will not interchange with them. Many MRO accounts will want to do business with T&B, but must have the same interface on the covers as the existing Appleton Fittings that they have installed in their facility.

Q: Can we be competitive against Appleton on their Form 35 conduit bodies?

A: Yes. Our gold pricing closely reflects their gold pricing. When working on a conversion at a distributor, find out the group discount Appleton is giving that distributor. We can quickly match our pricing.

Q: Can we compete with Crouse-Hinds on their Form 5 fittings?

A: Yes.

Q: Appleton and Crouse offer rollers on their fittings. Why don't we?

A: Look at the attached document that explains if the rollers are truly effective, or just an unnecessary cost adder.

Q: Are the iron covers available right now?

A: Iron covers will be available in Q2. If you come across a need for iron covers, please contact Craig Yoss. We have solutions we can offer.

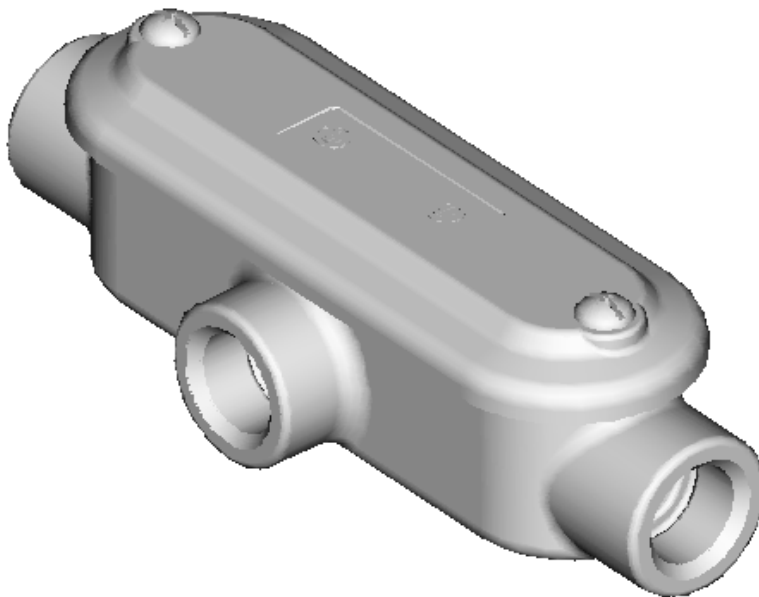
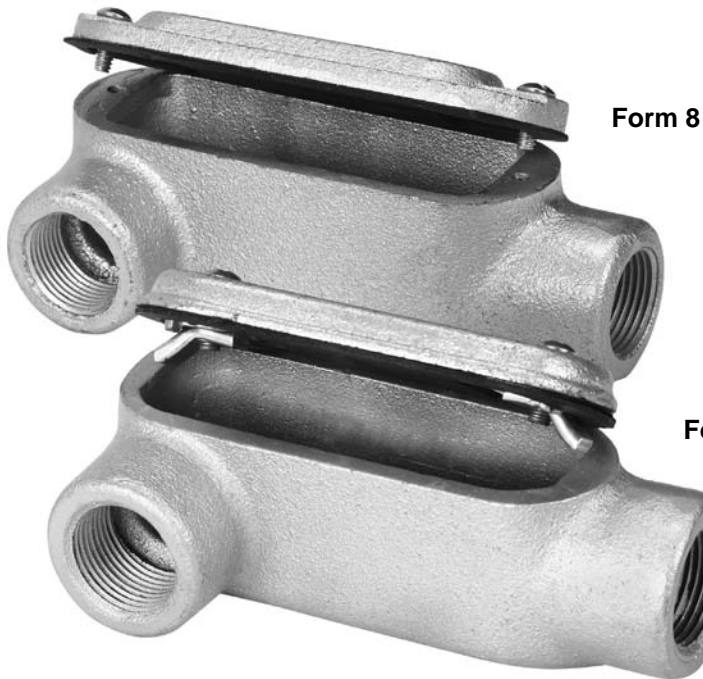
Hazardous/Non-Hazardous Conduit Bodies

Where are conduit bodies used?

Conduit bodies are used everywhere. Think of this: What distributor or end-user do you know that does not stock or use rigid conduit? Those people are also using conduit bodies.

What type of conduit bodies are there?

Conduit bodies are made from two materials, Iron or aluminum. Of the iron fittings, there are essentially four types of fittings used.



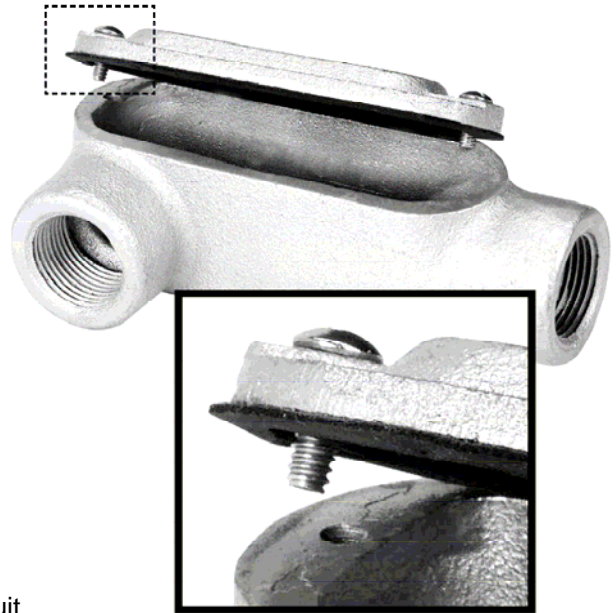
Hazardous/Non-Hazardous Conduit Bodies

Form 8 Conduit Bodies

Other than Mogul fittings, Form 8 is the largest conduit body in its class. Some installers like this for this reason. As shown in the photograph, the cover secures itself to the conduit body by screwing directly into it. There are two drilled holes in the body.

In areas where moisture is prevalent, this may be undesirable. These two holes in the body might corrode. If someone tries to remove the cover, the threads could potentially strip out, leaving the installer without a means of putting the cover on. One might try to re-drill the hole, or have to re-work the conduit run altogether. Either way, this requires time.

Crouse-Hinds, Appleton, and Killark also make a Form 8 conduit body. OZ Gedney does not make a Form 8 conduit body.



Form 8	Material	Finish	Size (Ranking)	Ratings	ASTM STANDARD
T&B	Gray Iron	Electrogalvanized with aluminum acrylic paint	Standard	UL/CSA	Class 30
Crouse-Hinds	Gray Iron	Electrogalvanized with aluminum acrylic paint	Smaller	UL/CSA	???
Appleton	Gray Iron	Zinc Electroplate Dichromate Epoxy Powder Coat	Standard	UL/CSA	Class 30
Killark	Gray Iron	Tri-Coat Finish of Electrozinc, Chromate Sealant, and electrostatically applied powder coat	Standard	UL/CSA	Class 30

Form 8 Conduit Bodies Catalog Construction

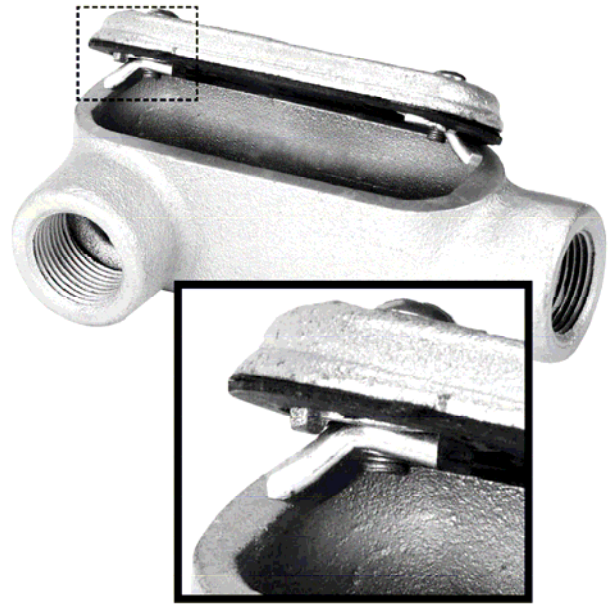
Style	Size	8
LB	1 = 1/2"	8 = Form 8
LR	2 = 3/4"	
LL	3 = 1"	
Etc.		

Example: LB18 = 1/2" LB Form 8 Conduit Body

Hazardous/Non-Hazardous Conduit Bodies

Form 7 Conduit Bodies

Form 7 conduit bodies are the smaller of the iron conduit bodies. These fittings are unique in that the conduit bodies do not have drilled holes in them. As can be seen by the photo, the cover has a wedgenut clip. When the screw is tightened on the cover, the clip secures on to a lip at under top of the conduit body. This is ideal for areas of corrosion or moisture. There are no holes on the body that could potentially rust out.



Form 7	Material	Finish	Size (Ranking)	Ratings	ASTM STANDARD
T&B	Gray Iron	Electrogalvanized with aluminum acrylic paint	Standard	UL/CSA	Class 30
Crouse-Hinds	Gray Iron	Electrogalvanized with aluminum acrylic paint	Smaller	UL/CSA	???
Appleton	Gray Iron	Zinc Electroplate Dichromate Epoxy Powder Coat	Standard	UL/CSA	Class 30
OZ Gedney	Gray Iron	Zinc Plate Aluminum Enamel	Smaller	UL/CSA	???
Killark	Gray Iron	Tri-Coat Finish of Electrozinc, Chromate Sealant, and electrostatically applied powder coat	Standard	UL/CSA	Class 30

Form 7 Conduit Bodies Catalog Construction

Style	Size	7
LB	1 = 1/2"	7= Form 7
LR	2 = 3/4"	
LL	3 = 1"	
Etc.		

Example: LB17 = 1/2" LB Form 7 Conduit Body

Hazardous/Non-Hazardous Conduit Bodies

Form 35 Conduit Bodies

Formerly, Form 35 conduit bodies were exclusively offered from Appleton. Form 35 conduit bodies are a little smaller than Form 8 fittings. Typically, Appleton will lead with this product.

There is one unique optional feature on this Appleton fitting design: On "LB" and "C" fittings sizes 1 " thru 4", a roller is included. This is supposed to provide protection and ease when pulling wires.

We examined the effectiveness of these rollers and found that "chaffing" of the conductors may still occur on the inside hub of the fitting. In our own tests, the conductors never really even touch this roller.

Crouse-Hinds and Killark have recently entered the market with their own versions of Form 35 conduit bodies.



Series 35 Catalog Construction

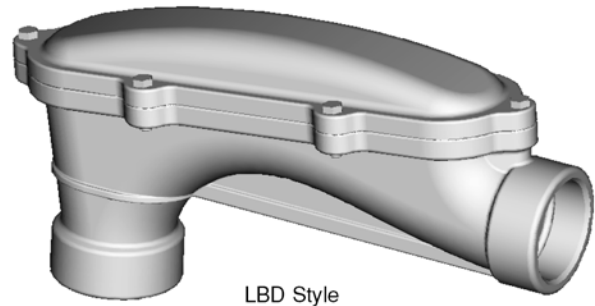
Style	Size	Material
LB	50 = 1/2"	Metallic
LR	75 = 3/4"	
C	100 = 1"	
T	125 = 1 1/4"	
Etc.		

Example: LB50M = 1/2" LB Series 35 Conduit Body

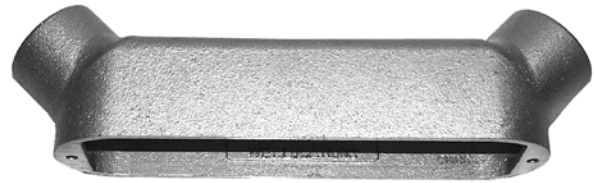
Hazardous/Non-Hazardous Conduit Bodies

Mogul Conduit Bodies

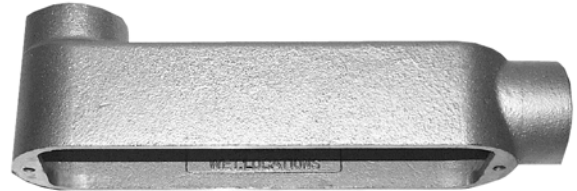
Mogul conduit bodies are the largest series of fittings. These are typically used in larger conduits where larger, less flexible wire is used. Also where there are a significant number of wires being pulled. These are typically longer fittings, which allow for an easier pull. These can also be used as service entrance fittings. There are essentially two types of iron mogul conduit bodies. The "BLB" series and the "LBD" series. The BLB series is a full compliment of fittings ("C", "LB", "T") while the LBD fitting is only available in an "LB" style. Our BLB style is UL rated for wet locations, while Crouse-Hinds does not possess this rating. Appleton, Crouse-Hinds, and OZ Gedney offer a version of these fittings. Killark is short in this area. With the exception of Crouse-Hinds on the BLB series, all manufacturers include a cover and gasket with this product. On the BLB Series, Crouse-Hinds sells the cover separately. This is very important when quoting jobs.



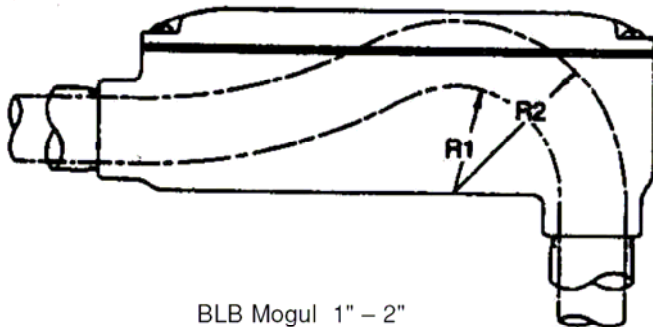
LBD Style



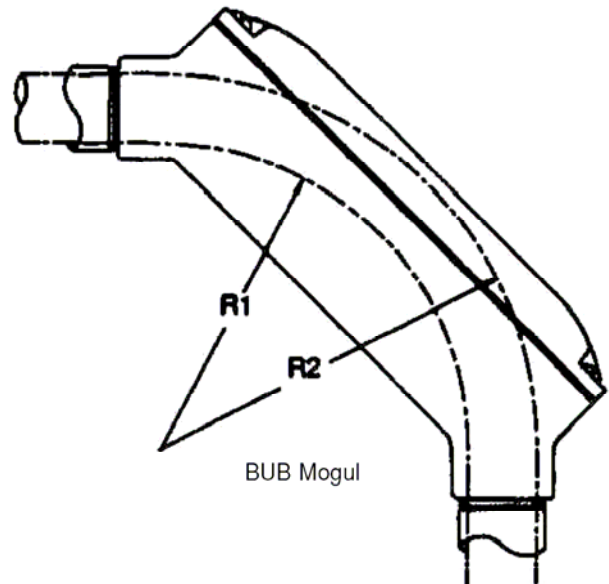
BUB Style



BLB Style



BLB Mogul 1" - 2"



BUB Mogul

BLB Series	Material	Finish	Notes	Ratings	ASTM STANDARD
T&B	Gray Iron	Electrogalvanized with aluminum acrylic paint	—	UL/CSA	Class 30
Crouse-Hinds	Gray Iron	Electrogalvanized with aluminum acrylic paint	Covers are sold separately. Does not have a rain tight listing	UL/CSA	???
Appleton	Malleable Iron	Zinc Electroplate Dichromate Epoxy Powder Coat	—	UL/CSA	ASTM-A47-77 Grades 32510
OZ Gedney	Cast Iron	Hot Dipped Galvanized	—	UL/CSA	???
Killark	DOES NOT HAVE				

LBD Series	Material	Finish	Notes	Ratings	ASTM STANDARD
T&B (Introducing 6/1/01)	Gray Iron	Electrogalvanized with aluminum acrylic paint	—	UL/CSA	—
Crouse-Hinds	Gray Iron	— " – 4" Electrogalvanized with aluminum acrylic paint 5" & 6" Zinc Chromate	Covers are sold separately. Does not have a rain tight listing	UL/CSA	???
Appleton	Gray Iron	Zinc Electroplate Dichromate Epoxy Powder Coat	—	UL/CSA	ASTM-A47-77 Grades 32510
OZ Gedney	Cast Iron	Hot Dipped Galvanized	—	UL/CSA	???
Killark	DOES NOT HAVE				

信德迈科技(北京)有限公司 CNMEC Technology Company
地址：北京市朝阳区望京SOHO-T1-C座2115室 邮编：100102

*Tel: 010-8428 2935 | * Fax: 010-8428 8762
*手机：139 1096 2635
*电子邮件：sales@cnmec.biz
主页：http://www.cnmec.biz